

# INSTALLATION INSTRUCTIONS

## Front Fork Marker Lamp Set (36500-24820)

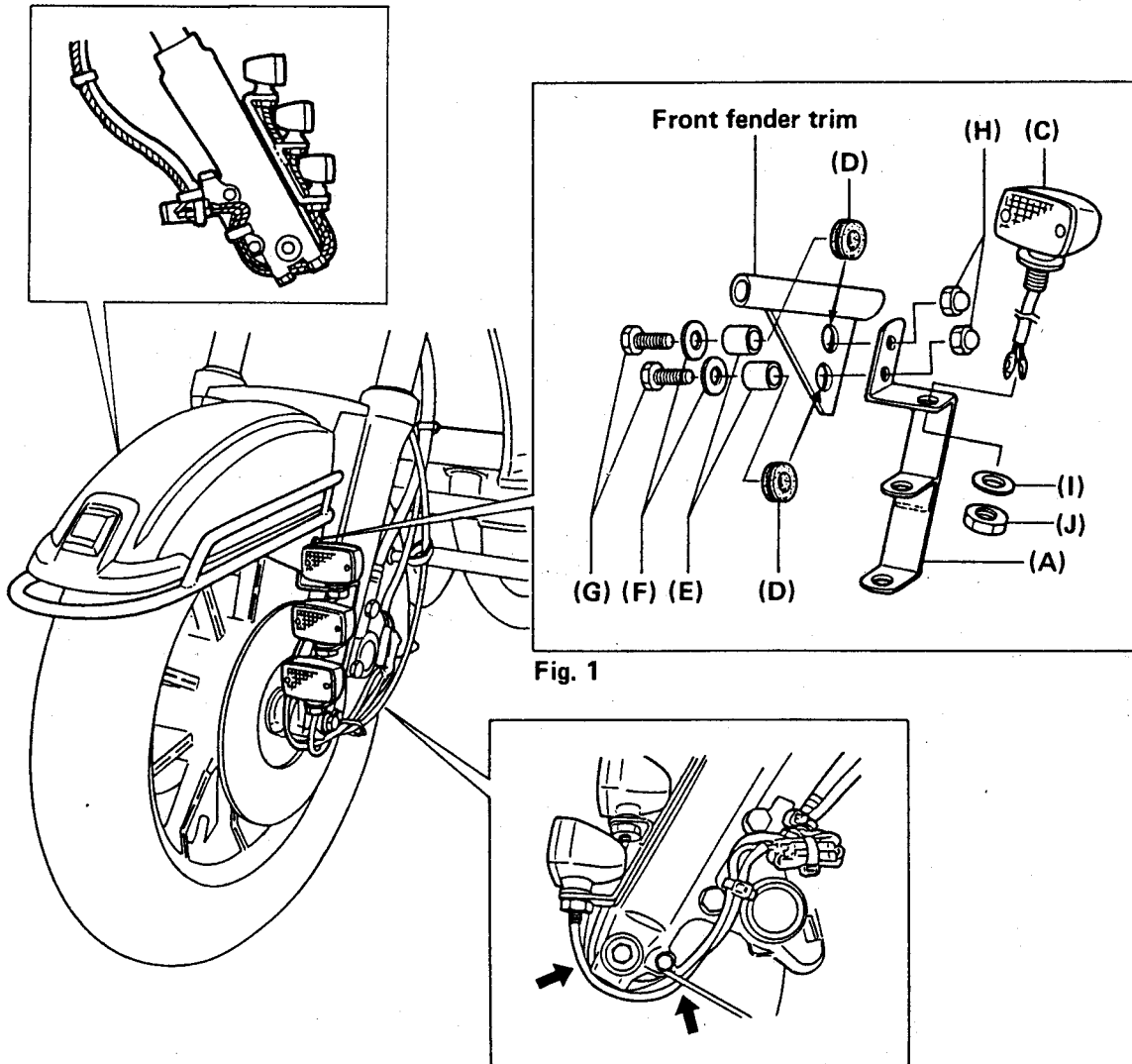


Fig. 1

### LEFT SIDE SHOWN

Letter	Qty	Description	Letter	Qty	Description
A	1	Bracket, Left	F	4	Flat Washer
B	1	Bracket, Right	G	4	6 x 20mm Hex. Bolt
C	6	Marker Lamp A	H	4	Crown Nut
D	4	Cushion	I	6	Flat Washer
E	4	Spacer	J	6	Nut

## Front Fork Marker Lamp Set 36500-24820

1. First, follow the instruction manual to install Marker Lamp Switch & Wiring Harness Kit (36500-24860).
2. This lamp set is designed so that it is installed to Front Fender Trim (53440-24A00), therefore follow the instruction manual to install the front fender trim.
3. Fit cushions (D) into the two holes each of the right and left side front fender trim. After inserting spacers (E) into the cushions, secure the marker lamp bracket to the front fender trim with bolt (G), flat washer (F) and crown nut (H) in the same manner of Fig. 1.
4. Remove the nuts (J) and washers (I) of the marker lamps on both sides. From top to bottom, route the lamp cords through the brackets and tighten the lamps with the washers (I) and nuts (J).

**Note:** Tighten the marker lamps securely while carefully adjusting so that each lamp directs exactly forward.

5. Left: Route the lamp wires from the inner side of the brackets down to the fork to between the speedometer wire and the clamp. Then, connect them to the wire harness.  
Right: Route on the inner side of the bolts.